

FRAG

INDUSTRIE

alternative solutions in industrial mechanics

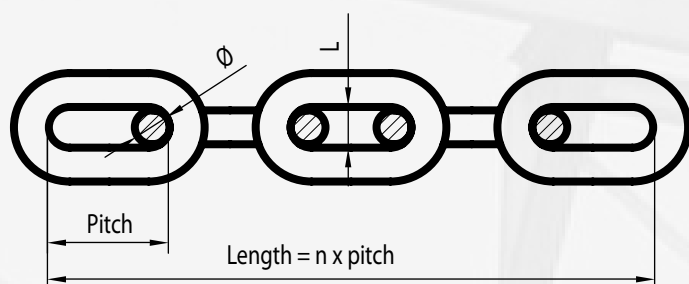
ADAPTABLE COMPONENTS

Marine Chain Elevator

chains, reinforced links,
pulleys, buckets



Chains for Bucket Elevators



The choice of chain diameter must be studied according to several criteria. It must take into consideration the speed, weight of mobile equipment, nature of the conveyed product, the coefficient of use, etc. The dimensions typically used for the elevators correspond to the French NF E 26012 or German DIN 764 standards. Other types of chains may be manufactured upon request.

> NF E 26012

Dimensions (mm)			Weight/m (kg)
ϕ	L	Pitch	
10	14	35	2,10
12	16,8	42	3,10
14	19,6	49	4,20
16	22,4	56	5,25
18	25,2	63	7,05
20	28	70	8,60
22	30,8	77	10,40
24	33,6	84	12,30
26	36,4	91	14,00
30	42	105	19,00
36	50,4	126	26,50
42	58,8	147	36,00

> DIN 764

Dimensions (mm)			Weight/m (kg)
ϕ	L	Pitch	
10	14	35	2,10
13	18	45	3,45
16	22	56	5,25
18	24	63	7,05
20	27	70	8,60
23	31	80	10,80
26	35	91	14,00
30	41	105	19,00
36	50	126	26,50
42	58	147	36,00

Pulleys (examples)

Pulleys with removable wheels



Molded monoblock pulleys



Toothed pulleys

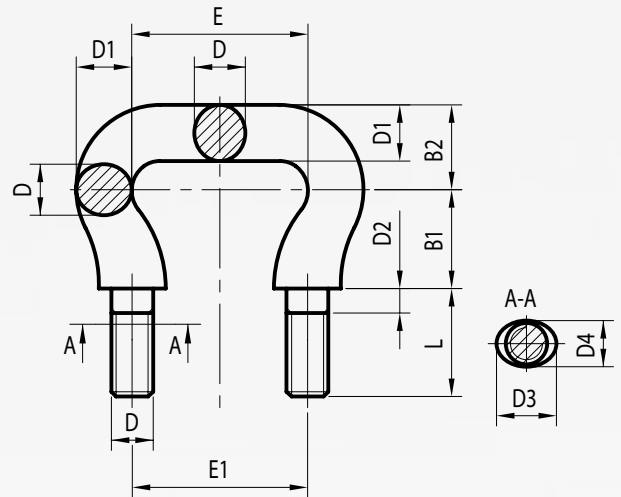


Reinforced Links

> SERIE 1

Reference	Dimensions (mm)										Weight (kg)
	D	E	E1	D1	D2	D3	D4	B1	B2	L	
ET 14.49.A	14	49	40	17	5	22	18	28,2	26,8	40	0,350
ET 16.56.A	16	56	52	19	5	26	21	32,8	30,2	42	0,520
ET 18.63.A	18	63	55	22	5	29	24	34,4	34,6	50	0,750
ET 20.70.A	20	70	58	24	5	32	26	38	38	54	1,010
ET 22.77.A	22	77	68	26	6	35	29	39	41	56	1,270
ET 24.84.A	24	84	74	28	6	38	31	45,2	44,8	62	1,500

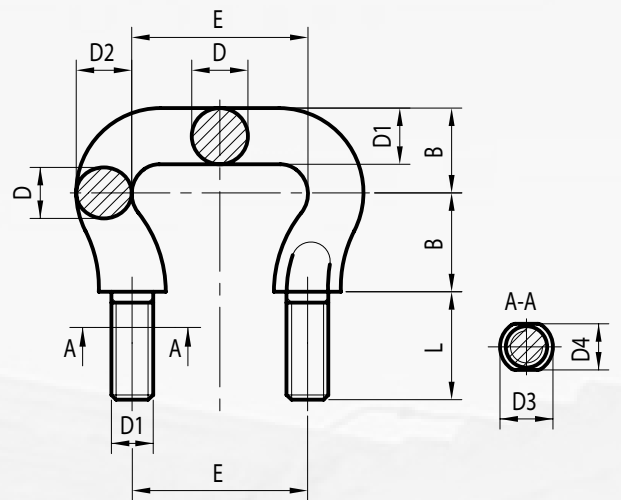
The \emptyset and pitch of the link correspond to the \emptyset and pitch of the chain.



> SERIE 2 - DIN 745

Reference	Dimensions (mm)								Weight (kg)
	D	E	D1	D2	D3	D4	B	L	
ET 18.63.B	18	63	M16	21	23	20	30	40	0,600
ET 20.70.B	20	70	M20	23	28	23	34	45	0,900
ET 23.80.B	23	80	M20	26	31	25	37	45	1,130
ET 26.91.B	26	91	M24	29	34	29	43	55	1,700
ET 30.105B	30	105	M24	34	38	31	50	55	2,300
ET 36.126.B	36	126	M30	40	44	37	59	70	4,000
ET 42.147.B	42	147	M30	46	50	42	68	70	5,650

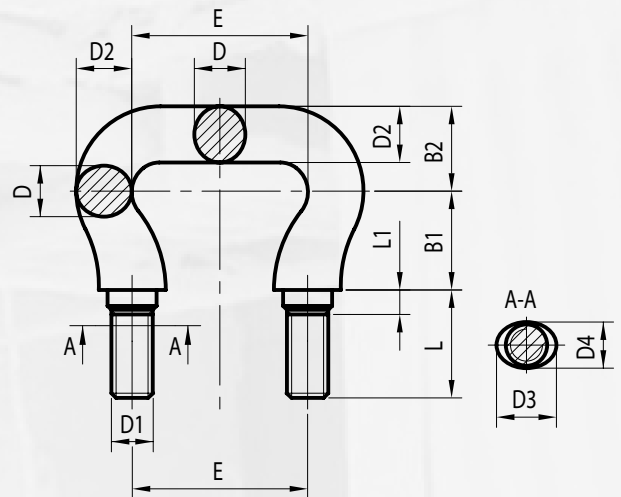
These links are always mounted with the chain dimension immediately below.
Ex: link of 20 with chain of 18.



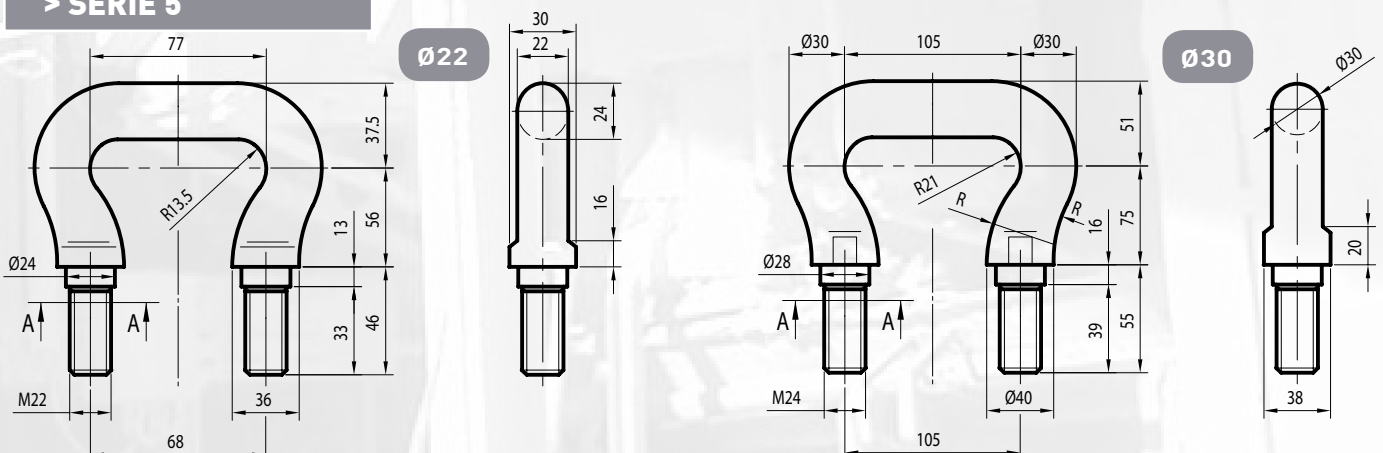
> SERIE 3

Reference	Dimensions (mm)											Weight (kg)
	D	E	D1	D2	D3	D4	D5	B1	B2	L	L1	
ET 30.105.C	30	105	M24	34	42	31	26	59,5	51,5	66	14	2,500
ET 36.126.C	36	126	M30	40	48	37	32	71	61	78	18	4,300
ET 42.147.C	42	147	M30	46	56	42	32	81	70	78	17	5,900

For higher \emptyset from 30 to 42, experience has led us to create links with the highest and most reinforced body, with a larger support surface for the sockets. The \emptyset and pitch of the link correspond to the \emptyset and pitch of the chain.



> SERIE 5



Other references and shapes are available. Please contact us.



Alternative maintenance solutions to optimize your production tool

For over thirty years, Frag Industrie has specialized in the supply of wear parts for mechanical maintenance in heavy industry.

WE OFFER GLOBAL SOLUTIONS

IDENTIFICATION

Our experience and our presence in the field allows us to carry out the readings and audits to ensure the compatibility of parts that we offer with existing facilities.

RECOMMENDATION

To improve the stability and performance of wear parts, we analyze the operating conditions with users and suggest solutions by changing sizes, metallurgical grades or thermal treatments.

MECHANICAL APPROACH

Each piece proposed by Frag Industrie is the subject of a thorough study to verify whether it will fulfill the function for which it is intended.

Our technical teams go beyond reproduction on plans or according to descriptions: they study the context in which the parts will change, verifying the most sensitive points with users in the field to ensure the best performance.

INDUSTRIALIZATION AND MANUFACTURING MONITORING

Frag industrie has, in addition to its production workshop, a network of subcontractor partners carefully selected for their expertise and reliability.

For each part, our technicians break down the various phases of production and choose the most effective solutions to optimize manufacturing quality and costs.

The parts provided by Frag Industrie are mainly intended for strategic facilities.

A comprehensive solution – our **commitment** is to control all phases in order to deliver high-performance parts compatible with your system. For you, this brings the **security** of relying on an experienced and dependable liable structure, which will set the goals of its intervention together with you and will take its full share of responsibility.

FRAG Industrie

80 avenue Henri Dunant
84300 Cavailon - FRANCE

Tél : +33 (0)4.90.78.29.00
Fax : +33 (0)4.90.78.27.78

contact@fragindustrie.com
www.fragindustrie.com

Industries

- Chemical Fertilizer Industry
- Cement Plants
- Thermal Power Plants
- Mines & Quarries
- Sugar Refineries
- Agribusiness
- Glass Factories
- Incineration Plants
- Timber Industry